



IPL-0003

ILLUSTRATED PART LIST

Customer:	MAZ
Axle Model:	NDS56LF
Axle P/N:	K26844 XXXXXXXXXX K26870 XXXXXXXXXX
Document:	IPL-0003
Issue:	B

The description, testing procedures, and specifications contained in this parts / service publication were current at time of writing. This manual will not be updated. If in doubt about any aspect of maintenance or servicing of the axle please contact the vehicle builder or our service department directly.

SPICER® products are subject to continuous development and we reserve the right to modify procedures and to make changes in specifications at any time without prior notice and without incurring in any obligation.

The recommendations of the vehicle manufacturer should be considered as the primary source of service information regarding this **SPICER**® product. This manual is intended to be used as a supplement to such information.

Any references to brand names in this publication are made simply as an example of the types of tools and materials recommended for use and, as such, should not be considered as an endorsement.

This manual is the property of **Commercial Vehicle Products – Europe**, a division of **Dana Holding Corporation**, and may not be copied or disseminated without prior agreement of **Commercial Vehicle Products– Europe**, a division of **Dana Holding Corporation**.

Commercial Vehicle Products – Europe, a division of **Dana Holding Corporation**, recommends following all manufacturers recommendations for the proper handling and disposal of lubricants and solvents. For further information please contact the lubricants and solvents supplier.

EVERY EFFORT HAS BEEN MADE TO ENSURE THE ACCURACY OF THE INFORMATION CONTAINED WITHIN THIS MANUAL.

HOWEVER, COMMERCIAL VEHICLE PRODUCTS – EUROPE, A DIVISION OF DANA HOLDING CORPORATION, MAKES NO EXPRESSED OR IMPLIED WARRANTY OR REPRESENTATION BASED ON THE ENCLOSED INFORMATION.

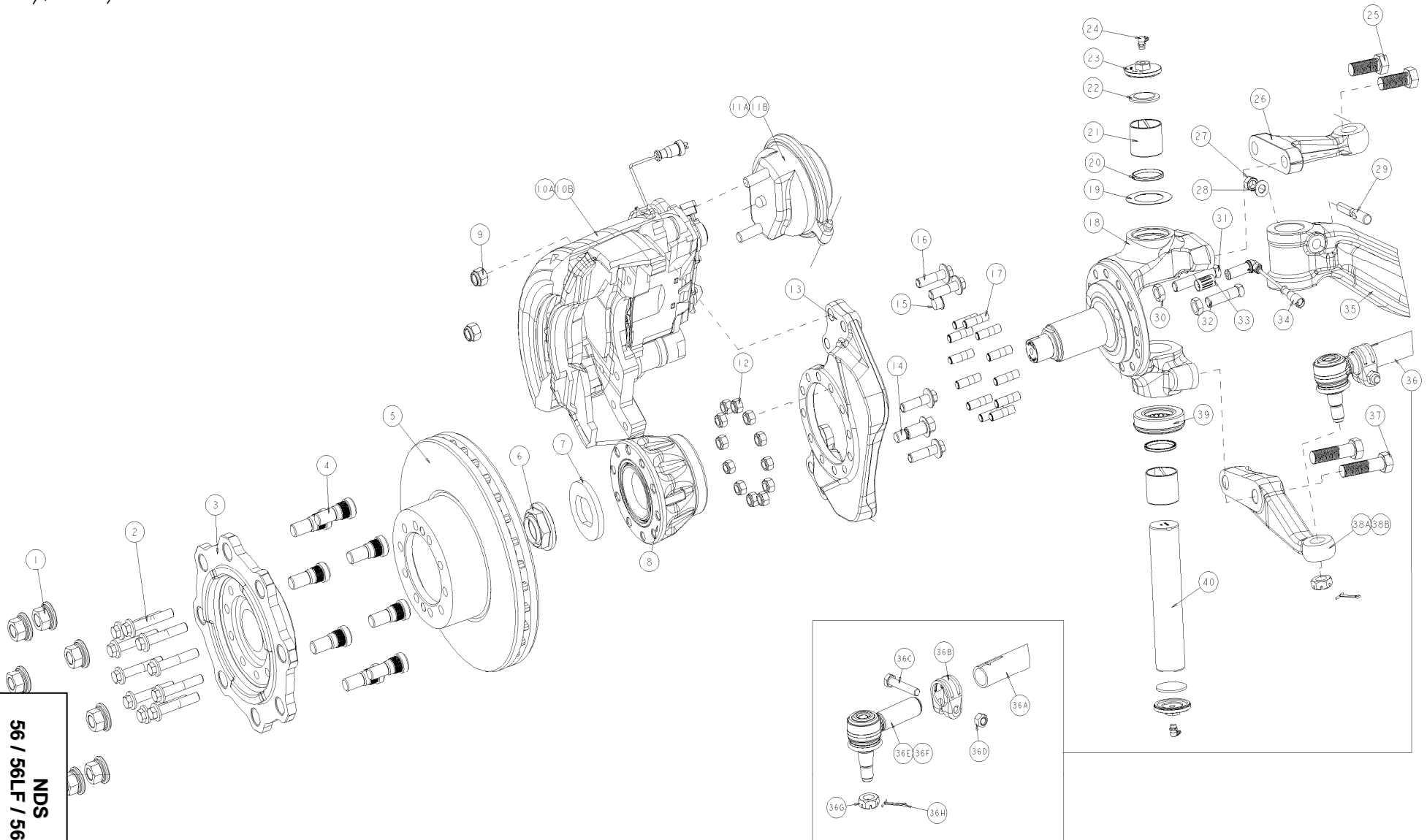
Last Modification	Date	Approved by	Date	Issue	Document	Eng. Change
A. Urio	11/11/08	EM	11/11/08	B	IPL-0003	NC08680A



People Finding A Better Way[®]

NDS
56 / 56LF / 56XLF

EV-NDS-001



EV-NDS-001

NDS
56 / 56LF / 56XLF

Dana Holding Corporation
Commercial Vehicle Products – Europe

Technical Publications CVPE © 2008 Dana Limited
for more information www.dana.com

NDS56LF K26844 – K26870 – Tightening torques:

- Refer to relevant Service Manual for further information:

613513 – Service Manual NDS

613511 – Lubrication Manual

613514 – Service manual Disc Brake PAN17, PAN19 etc

- Refer to EV-NDS-001, included in this IPL, for relevant Exploded View

Item	Part Number	Description	Type	Remarks	Torque (N·m)	Torque (lbs-ft)
1	830221 833205	Wheel nut (M20 x 1.5 - RH)	M20 x 1.5		385 - 430	285-315
2	F5064/55	Flanged bolt (M14 X 1.5) ³	M14 x 1.5		233 - 260	174-192
6	R8863/156	Hub Bearing – Nut	1 ½" – 12UNF		475 - 542	350-400
9	MX-1-1601	Nut – Self Lock (M16 x 1.5)	M16 x 1.5		180 - 210	133-155
12	SL228/6	Nut – Self Lock (1/2" UNF)	½" UNF		115 - 140	85-103
17	SL785/110	Stud (1/2" UNF)	½" UNF	Refer to relevant Service Manual for Stud Fitting Procedure	n/a	n/a
16	833169	Brake fixing – Fit bolt (M16 x 1.5)	M16 x 1.5		342 - 384	252-283
23	971370	Kingpin – Cap ²	M20 x 2.5		88 - 108	65-80
25	ML6020/50X	Top steering lever – Bolt (M20 x 2.5)	M20 x 2.5		705 - 780	520-575
27	220HN103	Drawkey – Nut ²	½" UNF		69 - 83	51-61
30	SL224/8	Stop Bolt – Nut (5/8" UNF)	5/8" UNF		122 - 163	90-120
37	ML6020/75X	Bottom steering lever – Bolt (M20 x 2.5)	M20 x 2.5		705 - 780	520-575
38D	-	Clamp Assy – Self locking nut	M10 x 1		70 - 89	33-77
38G	-	Socket Assy w/ Hardware – Castle nut	M20 x 1.5		210 - 230	155-170

NOTE: Further information regarding fitting procedures can be found in the relevant Service Manual (**613513** - Service Manual NDS)



Dana Holding Corporation

Commercial Vehicle Products – Europe

Dana Automoción S.A.

Polígono Industrial de Landaben, Calle E

31012 Pamplona / Spain

TEL (+34-948) 289 100 FAX (+34-948) 188 164

APPLICATION POLICY

Capability ratings, features and specifications vary depending upon the model type of service. Applications approvals must be obtained from Commercial Vehicle Products - Europe. We reserve the right to change or modify our product specifications, configurations, or dimensions at any time without notice.

People Finding A Better Way[®]